

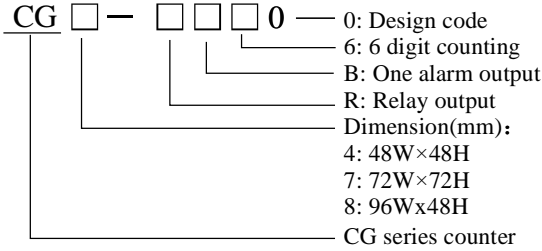
CG Series Digital Counter User's Manual



Features:

- ⊙ Dual line 6 digit bright LED display
- ⊙ Several optional panel size:48x48, 48x96, 72x72
- ⊙ Single input counting, single relay output
- ⊙ Manual rest, automation rest, key lock and power down memory function
- ⊙ Settable counting coefficient, NPN or PNP input selectable
- ⊙ Widely applied to timber processing, food machinery, packing machinery, steel processing industries, etc.

1. Model Indication

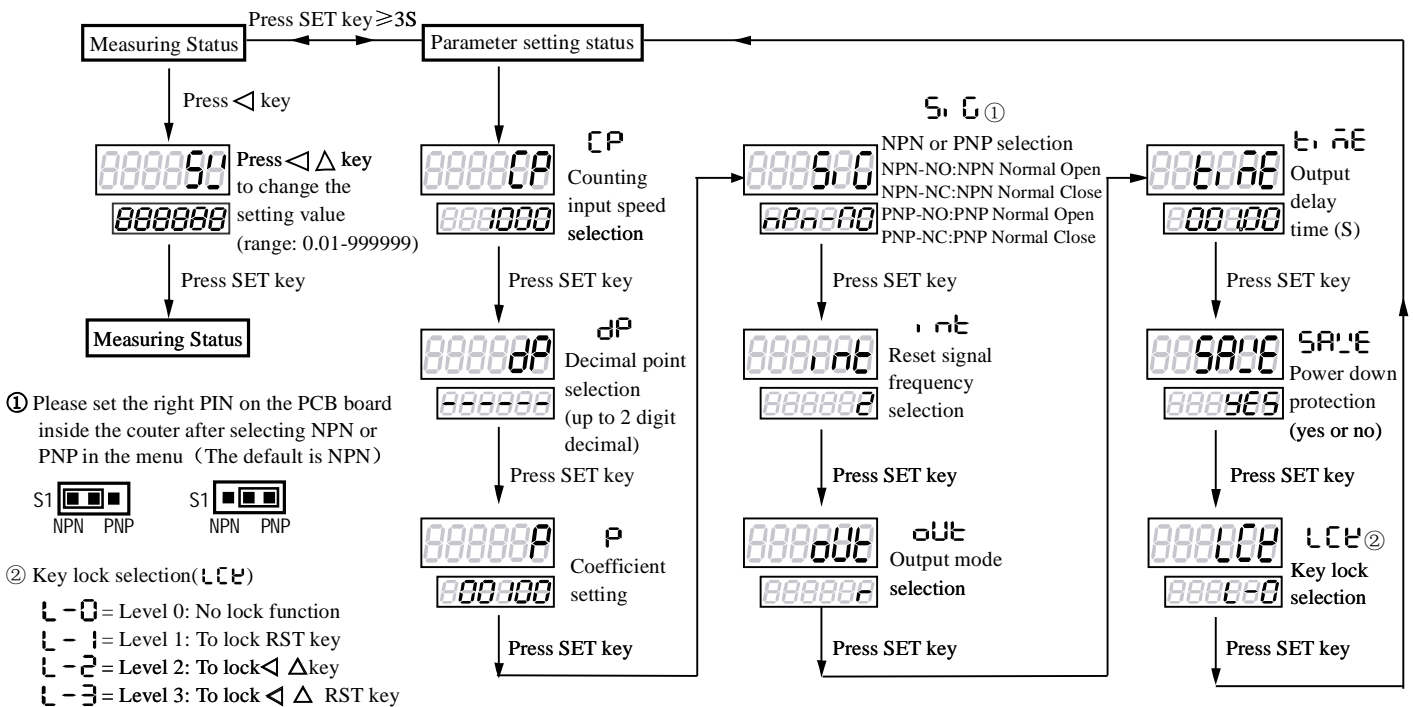


| Model | Dimension(mm) | Counting Digit | Alarm Output | Power Supply |
|----------|---------------|----------------|-----------------------|--------------|
| CG4-RB60 | 48W×48H×100L | 6 | One upper limit alarm | 220VAC |
| CG7-RB60 | 72W×72H×100L | 6 | One upper limit alarm | 110 / 220VAC |
| CG8-RB60 | 96W×48H×100L | 6 | One upper limit alarm | 110 / 220VAC |

2. Technical Parameter

| | |
|----------------------------------|---|
| Power Supply | 220VAC±10% 50Hz/60Hz |
| Total Power Consumption | ≤4W |
| Relay Capacity | 250VAC/3A |
| Output Power | DC18V±5V(≤25mA) |
| Insulation Resistance | ≥20MΩ |
| Insulation Strength | 1.5KV/1M |
| Counting Input Speed | ≤1/30/500/1000Hz |
| Counting Range | 0.01~999999 |
| Delay Time | 0.01~600.00s |
| Coefficient Setting Range | 0.01~9999.99 |
| Reset Signal Frequency Selection | 2, 10, 100, 500Hz selectable (This is the upper limit selection for effective reset signal frequency) |

3. Operation Menu

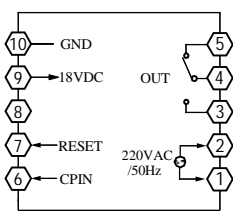
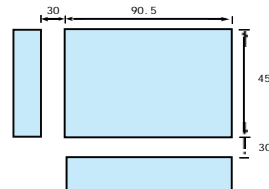
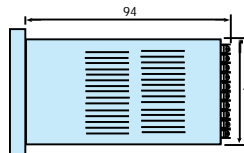
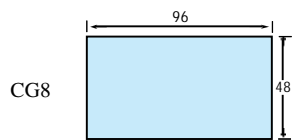
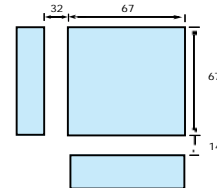
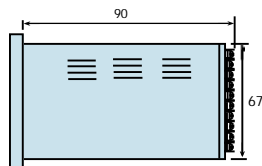
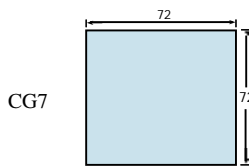
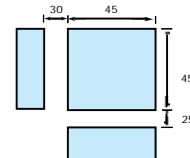
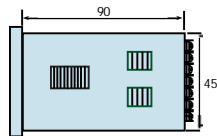
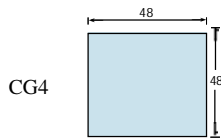


4. Counter Output Mode Diagram

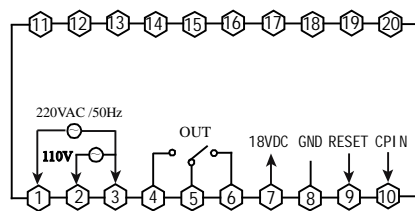
There are 4 types of output modes for option, N, F, R, C.

| | N | F | R | C |
|--------------------------|--|---|---|--|
| Output mode setting | | | | |
| Action after Counting up | Output and the counting value will remain till reset signal. | Counting value goes on, output will remain till reset signal. | When counting value reaches setting value, the display value and output will remain till the setting delay time, then reset to next counting automatically. | The counter will reset the counting value when it reaches the setting value, but the output will remain till the setting delay time. |

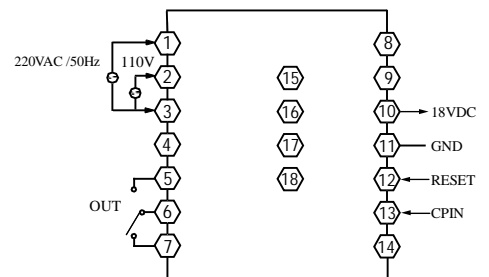
5. Dimension & Connection



CG4



CG8



CG7

Note: Please subject to the connection drawing on the counter if any changes.

